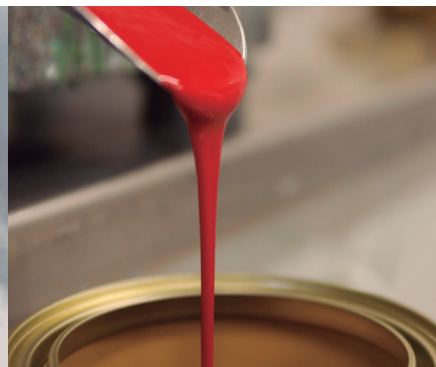


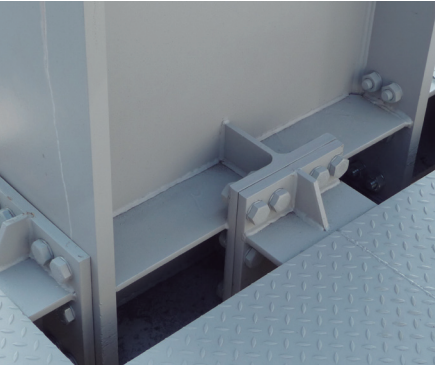


WELCOME TO COLOUR



 PINTURAS COLAMINA

DESIGN  
TECHNICAL ADVICE  
LABORATORY AND QUALITY CONTROL  
R+D+I  
MANUFACTURING  
PACKAGING AND LABELLING  
LOGISTICS



DECORATION  
INDUSTRY  
FLOOR WATERPROOFING  
WOOD  
SPECIAL PAINTS  
CUSTOMISED PAINTS



# company

OVER HALF A CENTURY DREAMING IN COLOUR





### HISTORY

Over fifty years devoted to the manufacture, distribution and sale of paints. Three generations dedicated to attain the best products and the best prices.

### MISSION

Solutions adapted to your needs by means of top-quality and guaranteed services and products.

### VALUES

Honesty, confidence, transparency, effort and servicing.

### CONFIDENCE

Our best prize is the acknowledgement by users, big corporations and SMEs from every sector —car industry, construction, food, auxiliary, metal, equipment—, both in Spain and abroad, in countries such as France, Czech Republic, Bulgaria, China, Panama and the United States.

A joint effort, performed with over one hundred distributors, with which we share our customer-oriented policies, providing a high added value.



### SERVICE = SOLUTION

- Work oriented to the search of the most reliable, effective and profitable solution, for each customer.
- Adapted and guaranteed products, complying with the demanding requirements, considering the different physical, climatologic and technical situations.

### SERVICE = NEARNESS

- Absolute availability and effective response to both technical and commercial consultations.
- Fluent and constant communication: The Technical Department of PINTURAS COLAMINA will always assist you almost immediately.

### SERVICE = FLEXIBILITY

- In addition to a wide range of products in stock, we have capacity, means and technical knowledge, in order to develop "tailor-made" products.
- Batches from 80 litres, and even smaller in some cases, always with very flexible delivery terms, from 24-48 hours.
- Service of samples from 24-48 hours.

## CONTROLLED AND CERTIFIED PRODUCTS WITH THE MAXIMUM GUARANTEES



### QUALITY IN PRODUCTS AND PROCESSING

- PINTURAS COLAMINA has been granted the UNE-EN ISO 9001 certification for the design and manufacture of water paints and solvents: a fundamental quality management instrument that guarantees the total quality of our products.
- Products submitted to strict quality controls since their investigation and requirements of raw materials from suppliers, testing and formulation, until their manufacture, packaging and labelling.

### RESPONSE TO THE MOST DEMANDING REQUIREMENTS

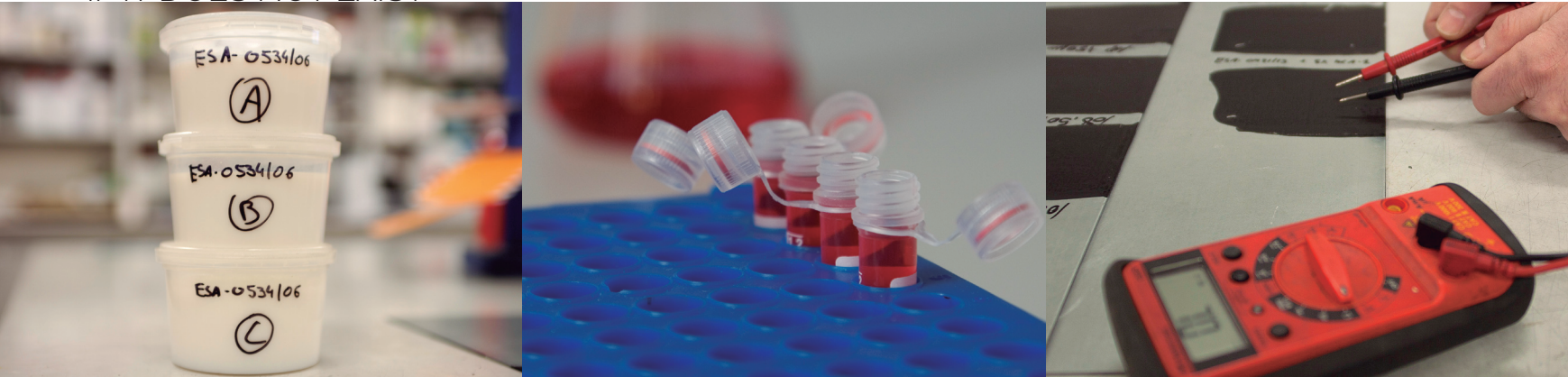
- PINTURAS COLAMINA has given a response, with maximum guarantees, to the most demanding requirements of multinational corporations and big companies of all sectors, evidencing the total reliability concerning the applications, performance and durability of our products.



WE PERFORM RESEARCH WORK  
TOWARD PROGRESS AND ACHIEVE  
BETTER PRODUCTS THAT FACILITATE  
EVERYDAY LIFE



DEVELOPMENT OF THE PRODUCT THAT BEST SUITS EACH CUSTOMER OR CREATED IF IT DOES NOT EXIST



#### TECHNICAL ADVICE

- Analysis of the needs and recommendation of the most appropriate product depending on conditions, surface, environment or other variables.
- Performance of colour studies, tests in our own laboratories and, if needed, field studies on the site, checking the product response under real conditions.


#### THE FUTURE IS NOW R + D + I

- Professionals with a solid training and great experience who work permanently in the design and the improvement of our products so as to enhance their applications, all of it minimising their impact upon humans and the environment.



# resources and processes

PEOPLE, RESOURCES AND PROCESSES  
COORDINATED TO ATTAIN THE BEST  
RESULTS



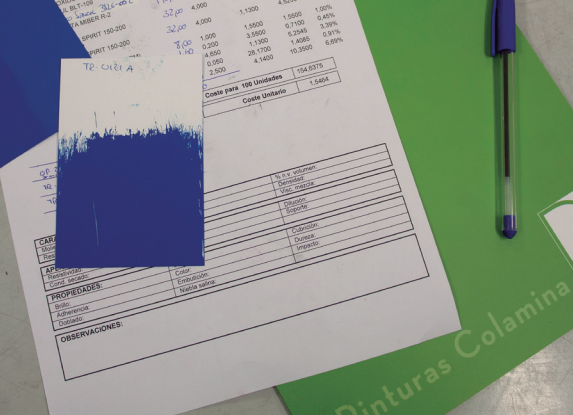
PINTURAS COLAMINA has been manufacturing paints for over half a century with a same philosophy but using the most advanced means and production methods. A clear vision and the control over all the means and processes have allowed the company to maintain a sustained growth.

#### THE BEST PROFESSIONALS

- A professional team, committed, experienced, coordinated and trained specifically for the job.

#### THE BEST MEANS

- A team working with the necessary technology, machinery and tools for performing their job in the most effective manner.



## DESIGN

- Permanent innovation for the creation of new products and the improvement and reformulation of the existing ones.
- Continuous and fluent contact with suppliers for the validation of new raw materials and the application of improvements in our finished products.

## LABORATORY AND QUALITY CONTROL

- The quality of our products is 100% guaranteed.
- Equipped with the most advanced instruments for the performance of tests and sampling.
- Continuous quality controls of raw materials and finished products.

## MANUFACTURING

- High production capacity allowing us to respond with great capability to the orders within the agreed terms.
- Permanent investments in technology and machinery leading to continuous improvement in our production processes.

## QUALITY, TRACEABILITY AND MAXIMUM CONTROL TO ACHIEVE EXCELLENCE



### PACKAGING AND LABELLING

- Strict compliance with the current legislation (information on toxicity level, flammability, environmental impact, standards of usage and handling or composition).
- Lines of customised packaging and the possibility of manufacturing white-label products in diverse formats and sizes.
- Versatility for packaging the same product in different container formats and sizes.


### LOGISTICS

- Adaptation to the needs of each customer and capacity for delivering our products to the sites where our customers need them, respecting the delivery terms and the commitments made.
- Coordination with suppliers of logistic services in order to offer an integral service.
- 24-48 hour delivery service within the Spanish territory.



# products

SOLUTIONS FOR EVERYTHING  
AND EVERYBODY WITH MAXIMUM  
GUARANTEES



PINTURAS COLAMINA offers a wide range of water and solvent paints, providing numberless solutions for the most diverse areas, sectors and production activities. In turn, most of our products can be manufactured in the specific colour desired by the customer.

#### ASK BEFORE SELECTING

- Before selecting a given type of paint, consult our Technical Department. They will advise you on the specific product that will fulfill your needs. If necessary we are also able to manufacture a new and unique product, specifically for you.
- We provide you with the description, technical sheet, safety card, applications, finishes and colours, yields, specific weight, drying, dilution and all sorts of information on all of our products.



## DECORATION

- SEALANTS AND FASTENERS:  
INDOOR AND OUTDOOR
- PRODUCTS FOR THE PREPARATION AND/OR REPAIR OF THE SUSTRATE
  - Anti-stain paints
  - Anti-dampness paints
- PLASTIC PAINTS FOR INDOOR AND OUTDOOR
  - Finishes Dull | Soft
  - Glossy | Metallic
- FACADE LINE
  - Protection varnishes
  - Finish coatings
- METAL DECORATION
  - Synthetic enamel
  - Forge effect

## INDUSTRY

- PRIMERS
  - Single-component
    - Synthetic
    - Rich in zinc
    - Multiple substrates
  - Two-component
    - Epoxy
    - Epoxy rich in zinc
    - Polyurethane
- THICK AND INTERMEDIATE LAYERS
  - Chlorine-rubber
  - Epoxy, High solids
- FINISHES
  - Single-component
    - Synthetic
    - Acrylic
  - Two-component
    - Epoxy
    - Polyurethane





## WATERPROOFING FLOORS

- WATERPROOFING
  - Elastic transitable coatings
  - Bi-component waterproofing agent
- FLOORS AND PAVEMENTS
  - Single-component
    - Water-based Acrylic
    - Solvent-based Acrylic/ Methacrylate
    - Solvent-based fast-drying Acrylic
  - Two-component
    - Solvent-based Epoxy
    - Solvent-based Polyurethane
    - Water-based Epoxy
    - 100%-solids Epoxy

## WOOD

- SEALANTS AND PRIMERS
- FINISHES - VARNISHES
  - Open-pore | Closed-pore

## SPECIAL PAINTS

- THERMO-INSULATING PAINTS
- PEELABLE VARNISH
- ANTI-BACTERIAL PAINTS
- HEAT-SHIELDING PAINTS
- PAINTS FOR SWIMMING POOLS
- STRIPPING PAINTS
- MINERALISING

## CUSTOMISED

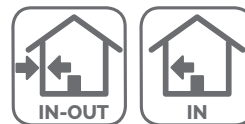
- SPECIFIC PRODUCTS FOR EACH CUSTOMER AND THEIR NEEDS

A blurred photograph of a busy airport or transit station hallway. People are walking in various directions, and the scene is filled with motion blur. A green pictogram sign is visible in the distance, and there are bright lights and windows on the right side of the hallway.

# meaning of **pictograms**

## MEANING OF PICTOGRAMS

### RECOMMENDED APPLICATION



### TYPE OF PAINT - FUNCTION



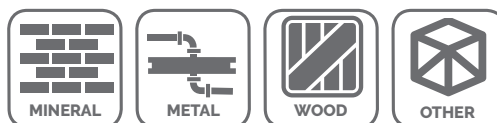
### COMPOSITION - BASE



### USE - AREA



### TYPE OF SUBSTRATE



### SURFACE - DIRECTION



### SPECIAL PROPERTIES



# decoration





In the area of decoration, PINTURAS COLAMINA offers paints adapted to all needs, so that the various environments – homes, offices, stores – can be painted to attain unparalleled aesthetics and functionality.

Sealants, fasteners, plastic paints for in-door and our-door, products for façade and for the decoration of metals and/or wood.

#### SEALANTS

LATEXCOL  
NANOCOL  
PERMACOL

#### PREPARATION AND REPAIR OF THE SUSTRATES

BARSAN  
CONCAR  
ANTI-DAMP PAINT

#### PLASTIC PAINTS

MATT/DULL  
ECOPLAST  
ECOMAT  
VODAMAT  
ALBAMAT  
TEIDEPLAST

#### SOFT

MATT G3  
MATT SILKY

#### GLOSSY

ECOPLUS  
EXTERPLAST

#### METALLIC

METALLIC TELPIN

#### FACADE LINE

##### PROTECTIVE VARNISHES OR PRIMERS

WATERPROOF VARNISH  
MECUFAL VARNISH  
PLIOLITE VARNISH  
ELASTIC VARNISH P.U.

##### TOPCOATS

ACRYLIC COATING  
FACADES TELPIN  
PETREOUS TELPIN  
ROUGH PETREOUS TELPIN  
SAYOLITE

##### METAL DECORATION

ALKYD ENAMEL  
MICACEOUS PAINT

## SEALANTS

Products for the preparation of in-door or out-door substrates, aimed at consolidating, sealing and, in general obtain a properly prepared substrate.

### LATEXCOL

Modified vinyl homopolymer, used as a primer, sealant and substrate consolidator.

Once dry, it can be painted with all sorts of paints and, due to its sealing power it gives way to saving finish paint.



### NANOCOL

Water-based colourless fixing and sealing varnish, manufactured from emulsified acrylic resins with very tiny particle sizes (nanoemulsions), in which penetration and adherence have been reinforced for its use on mineral substrates and its sensitivity to parameters and on finishes of a high alkalinity has been reduced.

It can be applied on concrete, stone and brick (porous, non enamelled) substrates, and, also, on gypsum, plaster, Pladur, distemper, cement smoothing and even wood, as well as on damaged or clayish surfaces as a penetrating fixing varnish and as a consolidator of the substrate.

Thanks to its high penetration and sealing properties, both the yield and the adherence of the whole system will be reinforced. At the same time, a decrease is attained concerning saline efflorescences or dye migrations, Pladur yellowish resins, etc.

Depending on the requirements, it can be used as a single product (in one or more coats) or, as a first coat, for different preferably water-based finishes.



### PERMACOL

Varnish manufactured from of emulsified acrylic resins, with very good adherence and elasticity, with permanent stickiness, designed mostly as a joint between old and new concrete, cement, trowelling, gypsum, etc.

When applied on old concrete, cement, gypsum or brick substrates and once 30-40 minutes have elapsed for water evaporation, it becomes a product with an excellent adherence and permanent stickiness, providing a good anchoring for later layer of concrete, cement or other.

Its adherence capacity does even last during several weeks and better in the absence of humidity, dust or other contaminating agents.

When applied on scarcely-porous or very thin perlite plasters or trowelling, it prevents the roller loaded with paint from slipping in excess, favouring the coverage of the substrate.

Although not as its main goal, it can be used for modifying mortars, plasters, etc., increasing their general resistances, adherence and impermeability.



## PREPARATION AND REPAIR OF THE SUBSTRATES



In case of problems with the substrate – dampness, stains, etc. -, solutions for application before painting.

### BARSAN

Satin paint manufacture on the base of alkyd resins, with a great coverage power, with elasticity and resistance to yellowing.

Easy-to-apply paint, especially with a brush, with good levelling properties and avoiding cords.

Appropriate for finishing wood, bricklaying and metallic substrates, exposed to a high level of dirt, such as bars, restaurants or old factories.



### CONCAR

Manufactured product based on Pliolite® resins, with a great coverage, matte, good whiteness and resistance to yellowing.

Can be easily applied, especially when a brush with a good leveling and no paintbrush marks.

It has a tyxotropic appearance and is especially indicated as an anti-stain paint for finishing work on usually mineral substrates with a high degree of dirtiness, such as those in bars, restaurants, old factories, defective gypsum-plasterboard partitions, humidity stained ceilings, etc.

Due to its low odour and excellent blockage of water-soluble stains, it can be used in closed or scarcely-ventilated indoor environments, where a uniform white finishing is required.

Good resistance to alkaline supports, water, detergents and yellowing. Good resistance to nicotine bleeding, tanins (gypsum-plasterboard) and any other type of water-soluble stains susceptible to be brought to the surface by water paints.



### ANTI-DAMP PAINT

The ANTI-DAMP PAINT is manufactured from resins dissolved in solvents, pigments, selected white loads and reactive minerals.

Once contacting water, it reacts with the later and hardens, sealing it flow and displacing it either partially or totally, so that the surface remains dry and even re-paintable in most cases.

Although it can be used outdoor, its use indoor is preferable for it to react against the water that traverses the walls.

It can be applied on mineral substrates, such as those in basements, garages, walls on ground, tunnels, etc., though which moisture emerges due to deficiency in the insulation of the wall against the ground and/or to soaking due to capillarity.



## PLASTIC PAINTS

In diverse sorts; styrene-acrylic, vinylic and acrylic with different finishes; dull, soft, glossy and metallic for use either in-door or in-door and out-door.

### MATT/DULL

#### ECOPLAST

Waterproof and economic coating for indoor finish based on an aqueous dispersion of an acrylic styrene resin, containing selected pigments and extenders.

The product was classified in fire-reaction tests as B-S1,d0 in accordance with the EN 13501-1-1:2007 + A1:2009 standard in a Test performed by the *Gaiker Foundation*.



#### ECOMAT

Plastic paint for indoor finish (especially) based on an aqueous dispersion of an acrylic styrene resin, containing selected pigments, loads and matting agents.

Product with a great covering and whiteness. Therefore, it is recommended as a protecting paint, on mineral or drywall substrates, submitted to plastering, plasticizing and/or other facings, where a decorative final finish is left, deep matte, with a good rubbing resistance and a highly competitive material coast. Its deep matte finish was specifically design in order to minimize defects in plain substrates, such as drywall, projected gypsum, etc. Similarly, it levels the differences in absorption of the substrate and helps in hiding partial touch-ups on big panes or plastising and joints that, in many occasions, are covered with a single coat of ECOMAT.

The product was classified in fire-reaction tests as B-S1,d0 in accordance with the EN 13501-1-1:2007 + A1:2009 standard in a Test performed by the *Gaiker Foundation*.



#### VODAMAT

Plastic paint for indoor (preferably) and outdoor finish, based on an aqueous dispersion of an acrylic styrene resin, containing selected pigments, fillers and shadings. Manufactured following the criteria in standard UNE 48243 (March 2007).

It provides excellent cover up and whiteness. This is why it is recommended as a finish paint on mineral, gypsum plates and other substrates, where it provides a decorative final finish with a good rub strength.

Its deep matte finish was especially designed for minimising defects in smooth substrates, such as gypsum plates, projected gypsum pieces, etc. Likewise, it reduces the differences in absorption by he substrate extraordinarily and helps to hide replastering work and joints that, in many occasions, can be covered with a single coat of our VODAMAT paint.

The product was classified in fire-reaction tests as B-S1,d0 in accordance with the EN 13501-1-1:2007 + A1:2009 standard in a Test performed by the *Gaiker Foundation*.





## PLASTIC PAINTS



### ALBAMAT

Waterproof plastic paint for indoor and outdoor finishes, based on an aqueous dispersion of a vinyl resin, containing selected pigments and extenders.

Paint with a great whiteness and cover, excellent applicability and scarce splashing with a roller.

Its formula contains loads and special pigments that provide it with a deep matte finish, which reduces substrate defects caused by overlapping or irregularities to a minimum.

The product was classified in fire-reaction tests as B-S1,d0 in accordance with the EN 13501-1-1:2007 + A1:2009 standard in a Test performed by the *Gaiker Foundation*.



### TEIDEPLAST

Waterproof coating for indoor and outdoor finish based on an aqueous dispersion of a vinyl resin, containing selected pigments and extenders.

Paint with great whiteness and cover up, excellent applicability and scarce roller splashing.

Formulated with special fillers and pigments, it provides a deep matte finish that reduces defects due to joints or irregularities in the substrate to a minimum.

Manufactured following the criteria in standard UNE 48243:1994.

The product was classified in fire-reaction tests as B-S1,d0 in accordance with the EN 13501-1-1:2007 + A1:2009 standard in a Test performed by the *Gaiker Foundation*.



# PLASTIC PAINTS



## SOFT

### MATT G3

Plastic paint for out-door and in-door finishes, based on a modified vinyl water resin, with selected pigments and extenders.

Paint with a great whiteness and excellent coverage, very good applicability and very scars splashing with a roller.

Its formula contains special loads and pigments for a matte finish that, by minimising the defects caused by overlapping or irregularities in the substrate, provides clean white surfaces and live shades in intense colours, with a high resistance to wet scrubbing and to marking as a whole.

The product was classified in fire-reaction tests as B-S1,d0 in accordance with the EN 13501-1-1:2007 + A1:2009 standard in a Test performed by the *Gaiker Foundation*.



### MATT SILKY

Outdoor-indoor finishing paint based on a vinyl modified water resin, with selected pigments and extenders.

Paint with great whiteness and good cover up, excellent applicability and scarce roller splashing.

It is formulated with special loads and pigments for a silky matte finish that minimises defects caused by joints and irregularities in the substrate, provides a clean white surface as well as live tones in intense colours, with high resistance to wet scrubbing and to all sorts of marks.

It is reinforced for offering a greater resistance to the growth of mould.

The product was classified in fire-reaction tests as B-S1,d0 in accordance with the EN 13501-1-1:2007 + A1:2009 standard in a Test performed by the *Gaiker Foundation*.





## PLASTIC PAINTS

### GLOSSY

#### ECOPLUS

Waterproof coating for indoor and outdoor finishes, based on an aqueous dispersion of a vinyl resin with selected pigments and extenders.

It is a paint with a good whiteness and coverage, excellent applicability and scars splashing from a roller.

In fire-reaction tests, this product was classified as B-S1,d0 as per the EN 13501-1:2007 + A1:2009 standards.



#### EXTERPLAST

Waterproof coating for outdoor and indoor finish based on an aqueous dispersion of a vinyl resin containing selected pigments and extenders.

Paint with great whiteness and cover up, excellent applicability and scarce roller splashing.

Because of its composition, this paint offers a high outdoor resistance and is suitable for painting all types of façades. It is resistant to pollution, ultraviolet rays and the attack of alkaline agents.

The product was classified in fire-reaction tests as B-S1,d0 in accordance with the EN 13501-1:2007 + A1:2009 standard in a Test performed by the *Gaiker Foundation*.



### METALLIC

#### METALLIC TELPIN

Decorative coating with a metallic effect for indoor finishes, based on the aqueous dispersion of a modified acrylic resin, with selected aluminium and extenders.

Due to its metallic appearance TELPIN METALLIC is indicated for the decoration of stores, bars, homes, etc., where modern and sophisticated environments are desired.



## FACADES

A wide range of solutions, such as varnishes, primers and finishes, for different types of substrates; Stone, concrete, mortar, etc..

### PROTECTIVE VARNISHES OR PRIMERS

#### WATERPROOF VARNISH

Clear Varnish manufactured based on siloxane resins and silanes in a solvent solution. Its raw materials were selected and explored so that, when applied on mineral substrates, it attains deep penetration and produce an invisible mono-molecular film that does not plug the pores of the substrate. Thus, breathability is maintained (reduced in less than 10%). It repels liquid water strongly and prevents it from soaking the substrate (reduction of absorption higher than 80% after 24 hours), as per the UNE EN ISO 15148 standard.

Applicable on the following substrates: concrete, natural or artificial stones, brick, calcareous brick, cement trowelling, putties and mineral paints, fibrocement, etc. The appearance of the substrate remains unchanged, with a high durability and UV resistance throughout time —even if the pearl effect is reduced—, while water repellence will:

- Minimize the disaggregating effects of the rain (whether acid or not) and of the freezing-de-freezing cycles.
- Reduce the appearance of saline efflorescence and dirt as a whole.
- Avoid the loss of temperature in the premises, caused by the evaporation of soaking water.
- Hinder the formation of fungi or algae colonies in the dry substrate.



#### MECUFAL VARNISH

Clear varnish based on non-yellowing methacrylate resins, in which adherence to mineral substrates has been reinforced and sensitivity to humidity has been reduced. Applicable on concrete, stone, (porous, not glazed) brick and other substrates, as penetrating and fixing varnish or as an anti-dust coating. Also, as a concrete setting membrane.



#### PLIOLITE VARNISH

Clear varnish, based on non-yellowing pliolite resins, used as an agglutination or consolidation agent on hardy consistent substrates (dusty, limed, etc.), as well as a penetrating and sealing varnish on porous substrates. It can be used on concrete, stone, brick (porous, non-enamelled) and other substrates. It must be used on previously painted substrates, unless the paint is removed beforehand.



#### ELASTIC VARNISH P.U.

One-component water-based polyurethane acrylic semi-dull varnish for protection and/or waterproofing of indoor and outdoor surfaces. Its excellence adherence, elasticity, hardness and outdoor and water resistance make it advisable as a finish varnish for different applications: especially for Micro-cement finish, and as a finish varnish in our façade waterproofing system AQUAFIX ADH, in roofing, terraces, etc.



## FACADES

### TOPCOATS

#### ACRYLIC COATING

Waterproof coating for indoor and outdoor finishing based on styrene/acrylic copolymers combining hardness and strength with elasticity and adhesion, including selected pigments and fillers with high stability in outdoor conditions.

The product has been modified in order to increase its resistance to water and alkali.

Its finish is smooth, homogeneous and of a deep matte, without any gloss, which does not highlight eventual defects or irregularities in the substrate.

All its raw materials (resins, additives and pigments) have been selected after searching for optimal adhesion, durability and outdoor strength.

Its wet scrub resistance is good, >10.000 washing cycles for 100 dry microns, as per UNE-EN ISO 11998:2002 (Class 3 in the UNE-EN 13300 classification).

The liquid water transmission rate is  $<0.1 \text{ kg}/(\text{m}^2 \times \text{h}^{1/2})$ , classification III (Low), as per the UNE-EN 1062-3 standard.

The water/vapour transmission speed is  $\approx 200 \text{ g}/\text{m}^2 \text{ day}$ , classification I (High), as per the UNE-EN ISO 7782-3 standard.

The product was classified in fire-reaction tests as B-S1,d0 in accordance with the EN 13501-1-1:2007 + A1:2009 standard in a Test performed by the *Gaiker Foundation*.



#### FACADES TELPIN

Elastic and waterproof paint based on an aqueous dispersion of modified acrylic resins, with great adherence to mineral substrates.

Manufactured with selected pigments and loads, it has a high general outdoor strength (varying with colours) and reinforced with additives that prevent the growth of fungi and of moss in humid environments.

Its outstanding general properties (adherence, elasticity, water and moss resistance, light stability, etc.), as well as its dull and smooth finish, make it ideal for outdoor applications on façades, wall fronts in public works, bridges, walls and all sorts of mineral substrates where excellent durability is required.

Very good resistance to water, outdoor conditions and general rough weather. Its adherence and elasticity allow to skip small cracks or deficiencies in the substrate.

Carbon-dioxide permeability or anti-carbonation effect. The product is classified as C1 (Sd>50) in accordance with the UNE-EN-1062:1 standard, as per the test performed by *Tecnalia* (Report number 14\_07817).

The product was classified in fire-reaction tests as B-S1,d0 in accordance with the EN 13501-1-1:2007 + A1:2009 standard in a Test performed by the *Gaiker Foundation*.



## FACADES



## TOPCOATS

### PETREOUS TELPIN

Petrous coating based on an aqueous dispersion of modified acrylic resins, producing a finish with a smooth rugosity, similar to a fine concrete trowel work, with a great adhesion to mineral substrates and a very good performance outdoors..

Its excellent general properties (adhesion, resistance to liquid water and permeability to water vapour, combination of hardness and elasticity, light stability and outdoor strength, etc.), as well as its great coverage and finish, make it ideal for outdoor and indoor applications on façades or any type of mineral wall fronts in dwellings, public works or civil construction as a whole, and, in general, for any type of substrates where great resistance and durability are required.

Very good resistance to water, yellowing, outdoor conditions and general rough weather. Good water vapour permeability.

The product was classified in fire-reaction tests as B-S1,d0 in accordance with the EN 13501-1-1:2007 + A1:2009 standard in a Test performed by the *Gaiker Foundation*.



### ROUGH PETREOUS TELPIN

Petrous coating based on a water-base dispersion of modified acrylic resins, with a rough finish and a rustic effect of a cement coarse trowelling type, with great adherence to mineral substrates and a very good performance outdoor.

Its excellent general properties (adherence, resistance to liquid water and permeability to water steam, hardness and elasticity combination, light and outdoor stability, etc.), as well as its great coverage and finish, make it ideal for outdoor or indoor applications, on facades or any other sort of mineral facings in dwellings, public works or civil works and, generally, on any substrates requiring great resistance and durability.

Very good resistance to water, to yellowing, to outdoor and poor weather conditions. Good water steam permeability.



### SAYOLITE

Solvent-based paint, waterproof and transpirable, manufactured from PLIOLITE-type resins (trademark), loads and selected pigments, with high adherence on mineral substrates and excellent outdoor durability. Its excellent general properties (hardness, adherence, elasticity, water-resistance, protection against carbonisation and moss, light stability, etc.), as well as its matte and smooth finish, make it ideal for outdoor applications on facades, public works facings, bridges, walls and all sorts of mineral substrates where excellent durability is required. Also, due to its low superficial pressure, it can be applied on old paints, as far as these are strongly adhered to the substrate and have enough consistency to bear the initial aggression of the solvent.

Very good resistance to water, outdoor and general weather conditions. Excellent anti-carbonisation effect (C1 in accordance with the UNE-EN-1062:1 standard). Very good resistance to detergents and to aggressive environments (marine, for instance).



## METAL DECORATION



Solvent-based paints for the decoration of metals and/or Wood, with smooth finishes and forge-type effect.

### ALKYD ENAMEL

Paint manufactured on the base of alkyd resins, with a great coverage power, with a good gloss and elasticity, advised for finishing metallic and non-metallic surfaces both indoor and outdoor.

Easy-to-apply paint, especially with a brush, with very good levelling properties and avoiding cords, which make it advisable for home applications, doors, windows, balconies, industrial structures or in public works and, also, machinery, metal carpentry, water boilers, etc.



### MICACEOUS PAINT

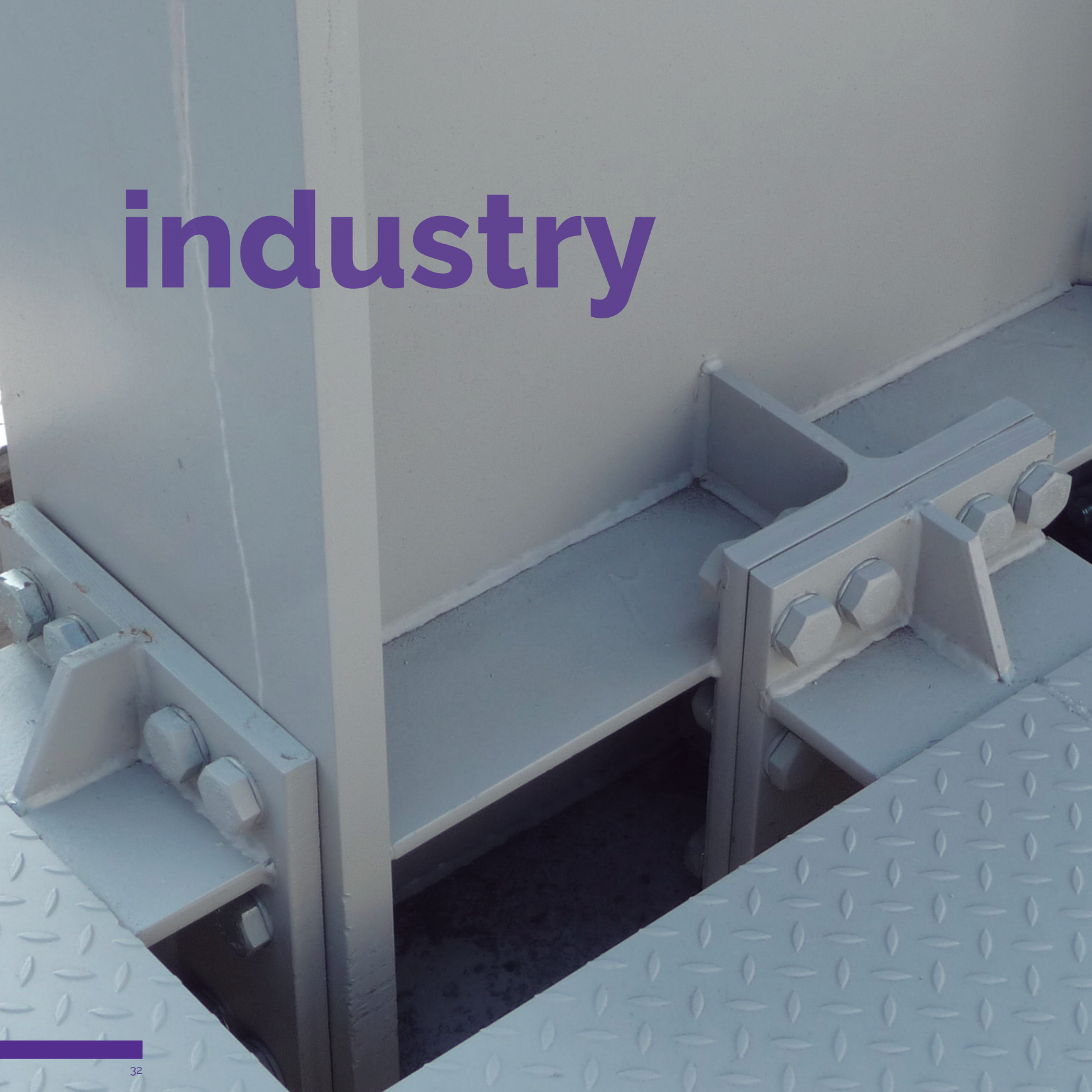
This coating is manufactured on the base of modified alkyd resins, with polyurethane and micaceous iron oxide pigments, with a high laminability, that offer a great resistance to oxidation, due to the barrier effect that they exert against the penetration of moisture.

Its excellent viscosity and brushability and its finish of the "cast-iron forge" type, along with its good resistance to oxidation, to wear and to outdoor conditions, make it advisable for the painting of railings, handrails, doors, fences and all sorts of small or big parts in which a special finish and protection are desired.

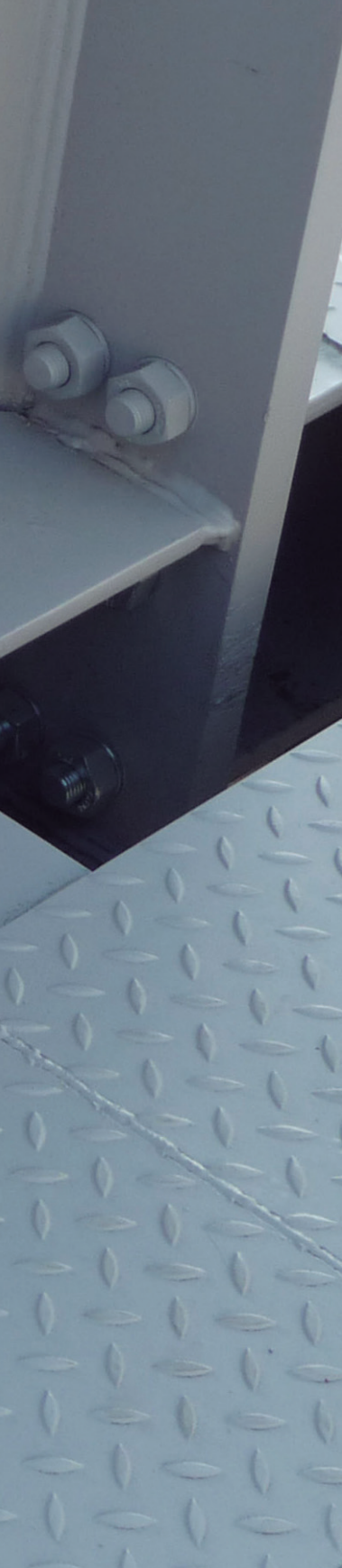
Good resistance to outdoor conditions and to oxidation, reinforced by the barrier effect produced by the micaceous iron oxide.



# industry







PINTURAS COLAMINA offers a wide variety of products for industrial units, such as premises, buildings, etc. Furthermore, our company develops paints for their use in specific industrial processes; Priming, Intermediate layers, high solids and Finishes.

#### PRIMERS

##### SINGLE - COMPONENT

##### SYNTHETIC / ALKYD TYPE

A-500

KARTPRIMER

KARTPRIMER EXTRA

##### RICH IN ZINC

ZINC - RICH PAINT

GALVANISING PAINT

##### MULTIPLE SUBSTRATES

SAYOPRIMER

SAYOPRIMER AQ

##### TWO - COMPONENT

SAYOEPOXI PRIMER

ZINC - RICH SAYOEPOXI

SAYOPOL PRIMER

#### THICK / INTERMEDIATE LAYERS

CHLORINE - RUBBER C.G.

SAYOEPOXI HS80

#### FINISHES

##### SINGLE - COMPONENT

ALKYD ENAMEL

SAYOEXPRES

SAYOCRIL NF

##### TWO - COMPONENT

SAYOEPOXI ENAMEL

SAYOPOL

SAYOPOL MX

SAYOPOL VARNISH MX

SAYOPOL FX



## PRIMERS

Wide range of primers, both single and two component, of different types, depending on the substrate and the finish Paint to be used.

### SINGLE - COMPONENT

Fast drying, water or solvent-based, for all sorts of metals and with different grades of anti-rust capacity.

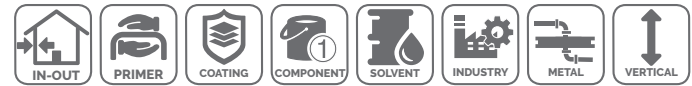
### SYNTHETIC / ALKYD TYPE

#### A-500

Industrial anti-oxidative fast-drying primer, manufactured from modified alkyd resins, with a good adherence and protection of all sorts of properly prepared iron and steel substrates.

Its good general balance of properties make it advisable as an economic primer for general use in boilermaking, metal structures, machinery, carpentry and ironwork, etc.

Its classification as M-1 in Fire Reaction, as per the UNE 23272-90 Standard, make it appropriate for its application on metal substrates that involve such demands.



#### KARTPRIMER

Fast drying anti-oxidative primer, manufactured from selected modified synthetic resins, pigments and loads, with fast-drying properties, very good adherence on iron and steel substrates and good repaintability.

Its fast drying and good adherence, along with a good general resistance balance, make it advisable as a primer in boilers, metallic structures and facilities, farm machinery and industrial vehicles, profiles and metal carpentry, machinery, tools, etc.



#### KARTPRIMER EXTRA

Fast drying primer, manufactured from modified synthetic resins and non-toxic anti-corrosive pigments, with fast-drying properties, very good adherence on iron and steel substrates and an excellent repaintability.

Its good general balance of chemical and corrosion resistance, along with its fast-drying and good adherence properties, make it advisable as a primer in boilers, metallic structures and facilities, farm machinery and industrial vehicles, profiles and metal carpentry, machinery, tools, etc.

High mechanic-chemical and corrosion resistance, for the range of synthetic priming.



## PRIMERS



### RICH IN ZINC

#### ZINC – RICH PAINT

Paint manufactured based on one-component ester epoxy resins, and high concentrations of powder zinc, which provide it with a high resistance to oxidation, due to the cathodic protection effect or "cold galvanisation".

Its excellent resistance to oxidation, water, nitre, industrial vapours, etc., make it highly advisable for the anti-corrosive treatment of metallic structures, machinery, piping, storage tanks, silos, etc., and especially, for the protection of weldings, cuts or damage areas in galvanised steel. Good resistance to out-door conditions and to oxidation, to water and to aggressive industrial environments.



#### GALVANISING PAINT

Paint manufactured on the base of especial modified resins and with high concentrations of powder zinc and aluminium, which provide a great resistance to oxidation, due to the cathodic protection effect or "cold galvanisation", along with a metallic finish that is partly similar to that of galvanised steel.

Its excellent resistance to oxidation, water, nitre, industrial vapours, etc., make it highly advisable for the anti-corrosive treatment of metallic structures, machinery, piping, storage tanks, silos, etc., and especially, for the protection of weldings, cuts or damage areas in galvanised steel. Good resistance to out-door conditions and to oxidation, to water and to aggressive industrial environments.





## PRIMERS

### SINGLE - COMPONENT MULTIPLE SUBSTRATES

#### SAYOPRIMER HV

Industrial primer manufactured based on modified polyvinyl-butyril resins, with an excellent drying and very good adherence.

It is recommended as a primer for parts or metal structures that were previously blasted or correctly degreased, in sectors such as automotive, construction and other.

Its composition, with phosphoric acid and non-toxic anti-corrosive pigments, reinforces its anti-oxidative protection throughout the time in which the parts remain at the shop waiting for the final paint coats.

Its classification as M-1 in accordance with the UNE 23727 standard, makes it appropriate for its application in metal substrates that involve such demands.

Excellent adherence type 0 (100%) on sandblasted iron, cold-laminated steel, galvanised steel properly degreased, in accordance with the UNE-EN ISO 2409:1996 standard.



#### SAYOPRIMER AQ

Industrial primer manufactured on the based on water-soluble resins, with good drying and adherence properties.

It is recommended as a primer for parts or metal structures that were previously blasted or correctly degreased, in sectors such as boilermaking, construction and other.

The use of special resins for this type of applications, as well as the selection of the pigments to be used, provide anti-oxidative protection throughout the time in which the parts remain at the shop waiting for the final paint coats.

Excellent adherence Type 0 (100%) on sandblasted iron, cold-laminated steel, galvanised steel and aluminium properly degreased, in accordance with the UNE-EN ISO 2409:1996 standard.

In fire-reaction tests, this product was classified as B-S1,d0 as per the EN 13501-1:2007 + A1:2009 standard; Test performed by the *Gaiker Foundation* under number P-14-16333.





## PRIMERS

### TWO – COMPONENT

Primers for high – demanding applications; adherence, resistance, anti – rust protection for use with two – component finishes.

#### SAYOEPOXI PRIMER

Two-component epoxy product, manufactured from epoxy resins, hardened with polyamide, with anti-corrosive pigmentation, based on zinc phosphate derivatives.

It is manufactured in accordance with the guidelines of the UNE 48271 standard.

When combined in a 4/1 ratio in volume with the GF-530 EPOXY CATALYSER, it provides a high performance priming and excellent applicability without sagging on metallic substrates such as iron, steel, galvanised steel and even aluminium, for applications such as boilermaking, civil works, carpentry and metal structures, machine tools, automotive industry, etc.

Very good resistance to water, diluted acids, alkalis, oils, some solvents, etc. Good mechanical resistance.



#### ZINC – RICH SAYOEPOXI

Two-component epoxy primer, manufactured on the base of polyamide-hardened epoxy resins, with anti-corrosive pigmentation, based on high concentrations of powder zinc, much higher than that demanded by the UNE 48277 standard, dated March 2005.

When combined in a 6/1 proportion in volume with EPOXY GF-530 CATALYSER, it produces high-performance priming on blasted iron or steel down to a Sa2 ½ grade, in accordance with UNE-EN ISO 8501-1 standard. It is recommended for sectors such as boilermaking, public works, carpentry and metal structures in aggressive environments, etc., when looking forward to a very high anti-corrosive protection, of the "cold galvanisation" type.

Excellent resistance to corrosion on properly prepared substrates and for thicknesses above 60-70 µ. Good general mechanical and chemical resistance.



#### SAYOPOL PRIMER

Two-component polyurethane product, manufactured from hardened acrylic resins, with aliphatic isocyanate, with anti-corrosive pigmentation, based on zinc phosphate derivatives.

When 10 kg are combined with 1 litre of GF-406 POLYURETHANE CATALYSER (approx. ratio 10/1 in weight, 7/1 in volume) an anti-corrosive primer is obtained, with a high performance and excellent applicability on metallic substrates: iron, steel, galvanised steel and aluminium. It can be used in sectors such as boilermaking, civil works, carpentry and metal structure, machine tools, automotive, etc.

Very good resistance to water, diluted acids, alkalis, oils, some solvents, etc. Good mechanical resistance. Good resistance to yellowing.



## THICK / INTERMEDIATE LAYERS

One – or two – component for painting on primer or, else directly on metals for cases in which high protection is required by the application of thick layers, with high flaking resistance.

### CHLORINE – RUBBER C.G.

One-component paint manufactured on the base of modified chlorinated rubber resins, solvents, pigments and loads, with fast drying properties and a good resistance to sagging in thick coats.

It evidences good mechanical-chemical and wear resistances and, in general, a good performance.

Product with a good applicability and drying properties, that make it useful as a maintenance paint on properly primed metal substrates, machinery, boilermaking, metallic structures, industrial facilities, etc.

Good resistance to water, acids, diluted alkalis and some oils and soft solvents. Good mechanical wear resistance.



### SAYOEPOXI HS80

Two-component coating/mastic manufactured from modified epoxy resins, hardened with polymeric amines, high in solids and with a high thickness (HS/HB).

Combined 1/1 in weight with our EPOXY HARDENER HS 80, it is recommended as a thick intermediate layer, as a finish paint or even as a single coat when painting tank trucks, wagons, tanks, metallic structures, towers, bridges, etc., providing them with excellent mechanical and chemical protection.

It has an excellent adherence on steel (even when rusty), galvanised steel, fibrocement and concrete (even when wet), several types of tiles or sandstones and other substrates.

Very good resistance to water, diluted acids, alkalis, oils, some solvents, etc. High mechanical resistance.

Its curing is relatively slow and, when outdoor, it chalks.



## FINISHES

Wide range of finishes, both single – and two – component, of different types, depending on the level of demand required. Durability, weather resistance, physical and chemical resistance, etc.

### SINGLE – COMPONENT

With different types, drying and application properties; brush, roller or gun on various sorts of substrates.

#### ALKYD ENAMEL

Paint manufactured on the base of alkyd resins, with a great coverage power, with a good gloss and elasticity, advised for finishing metallic and non-metallic surfaces both indoor and outdoor.

Easy-to-apply paint, especially with a brush, with very good levelling properties and avoiding cords, which make it advisable for home applications, doors, windows, balconies, industrial structures or in public works and, also, machinery, metal carpentry, water boilers, etc.



#### SAYOEXPRES

Fast-drying anti-oxidative finish enamel, manufactured with modified acrylic resins, loads and selected pigments.

It has a great coverage and resistance. It is indicated for the finishing of metallic and non-metallic surfaces, both indoor and outdoor.

Paint for application preferably with a gun; its good resistance properties make it advisable for home use, doors, windows, balconies, industrial structures or in public works and also, on machinery, metal carpentry, boilermaking, etc.



#### SAYOCRIL NF

Fast-drying one-component finish paint, producing a semi-brilliant finish, manufactured base on non-yellowing acrylic resins. It has a strong adherence on diverse metal materials, either ferric or non-ferric.

It can be applied on steel, aluminium, galvanised steel and other substrates, as finish paint for protection and decoration.

It is to be applied preferably with a gun; its good adherence and resistance make it advisable in home applications, on glass doors, balconies, industrial structures or in public works and, also, machinery, metal carpentry, boilermaking, etc.

Excellent adherence on steel, aluminium, galvanised steel and other properly prepared metal substrates.

Very good resistance to water, acids and diluted alkalis; highly resistant to light and outdoor weather conditions. It cannot resist solvents



## FINISHES

### TWO - COMPONENT

Finishing paints and/or varnishes, for high demanding applications, durability and resistance.

#### SAYOEPOXI ENAMEL

Two-component highly-glossy epoxy enamel, manufactured on the basis of polyamide-hardened epoxy resins.

After combination of 20 kg with 10 L (4/2) of our GF-533, EPOXY CATALYST, it is recommended as a finish paint with an excellent performance on floors and concrete, cement or other substrates.

It can also be used on metallic surfaces, whether primed or not, in steam-boiler industries, carpentry, metallic furniture, machinery, indoor structures, etc. Very good effectiveness on steel, concrete and properly prepared mineral substrates.

Very good resistance to water, diluted acids (hypochloric 10%, sulphuric 5%, ...), alkalis (ammonia 25%, sodium carbonate 50%), oils, some solvents, etc. High mechanical strength.

The product was classified in fire-reaction tests as Bfl - S1 in accordance with the EN 13501-1-1:2007 + A1:2009 standard in a Test performed by the *Gaiker Foundation*.



#### SAYOPOL

Two-component acrylic/polyurethane enamel, for high-quality high gloss and satin (upon request) finishes, with good mechanical, chemical and outdoor resistance and excellent direct adherence on steel, galvanised steel and aluminium.

Its applicability and sagging resistance are excellent; thus, smooth finishes can be attained without sagging, tearing or other application defects.

By combining it 4/1 in volume with the POLYURETHANE CATALYSER (GF-406) in both indoor and outdoor applications or with our INDOOR P.U. CATALYSER (GF-408) for indoor applications, it is recommended as a finish paint with a high performance on metallic surfaces, whether primed or not (galvanised steel, aluminium, etc.), in the boilermaking industries, industrial labelling, carpentry and metallic furniture, metal structures, public works, machinery, etc.

Total adherence (GT-0) in accordance with the INTA 160299 standard, on steel, galvanised steel and aluminium, with GF-406.

Good chemical resistance to water, acids and diluted alkalis, oils, some solvents, etc. It does also have good mechanical and outdoor resistance.

Our GF-408 indoor hardener, is faster, more economic and has better general resistance, except outdoor where it can yellow and lose gloss.





## FINISHES



### SAYOPOL MX

High-gloss two-component acrylic/polyurethane enamel, for high-quality high gloss finishes, and with maximal mechanical, chemical and outdoor resistance.

Combined in a 2/1 ratio in volume with our POLYURETHANE CATALYSER (GF-406) in both indoor and outdoor applications or with our INDOOR P.U. CATALYSER (GF-408) for indoor applications, it is recommended as a finish paint with a high performance on primed metal surfaces, in the boilermaking industry, carpentry and metallic furniture, metal structures, machinery, the painting of farm and industrial motor vehicles, etc.

Excellent chemical resistance to water, acids and diluted alkalis, oils, some solvents, etc. High mechanical and outdoor resistance.

Our indoor hardener GF-408 is faster, more economic and has better general resistances, except outdoor, where it can suffer yellowing and lose gloss.



### SAYOPOL VARNISH MX

Two -component polyurethane varnish, with high, medium or low gloss, manufactured with acrylic resins, hardened with aliphatic isocyanates, with great mechanical and chemical resistance and a low tendency to yellowing or to the loss of gloss.

When combined 1.5/1, 1.75/1 or 2/1 in volume, depending on gloss, with the POLYURETHANE HARDENER GF-406, it is recommended as a finish varnish on polyurethane, epoxy or similar paints, in which gloss and their general final resistance need to be enhanced.

It can also be applied on mineral substrates such as concrete, cement, stone, etc., after priming with the same product diluted 10-20% and taking into account that the tone could be darkened, providing a brilliant and plastified appearance. It is also appropriate, as a first coat (diluted) for anti-graffiti systems on porous mineral substrate. Very good resistance to water, acids, diluted alkalis, oils, some solvents, etc. High mechanical resistance. Under outdoor exposure, very good resistance to shading and yellowing.



### SAYOPOL FX

Two-component acrylic/polyurethane enamel. It is slightly elastic and has a high gloss, for very high-quality finishing and with very good mechanical, chemical and outdoor resistances.

Combined in a 5/2 ratio in volume with our POLYURETHANE CATALYSER (GF-406), it is recommended as a finish paint with very high performances on substrates that might suffer slight movements, such as cement, concrete, plastic, wood, etc.

Excellent chemical resistance to water, acids and diluted alkalis, oils, some solvents, etc. High mechanical and outdoor resistance.





**floors**  
waterproofing



Waterproofing and a perfect finishing of the floors are essential for facilities, such as garages, industrial premises, large commercial areas or with heavy traffic, to have the required durability and functionality.

PINTURAS COLAMINA offers specific products for their application on floors, with one or two components, paints without solvents or waterproofing.

#### WATERPROOFING

TELPIN COVER  
TELPIN COVER FIBER  
ELASTIC VARNISH P.U.  
CEMENTOUS TELFLEX

#### FLOORS AND PAVEMENTS

##### SINGLE COMPONENT

TELPIN SPORT  
MECUFAL VARNISH  
MECUFAL  
MECUFAL AQ  
SIGNATE PAINT  
SAYOCRIL ROADS

##### TWO - COMPONENT SOLVENT - BASED

SAYOEPOXI PENETRATING VARNISH  
SAYOEPOXI ENAMEL  
SAYOPOL FLOORS  
SAYOPOL VARNISH MX

##### TWO - COMPONENT WATER - BASED

URA EPOX VARNISH  
URA EPOX  
URA EPOX SEMI-DULL

##### TWO - COMPONENT 100% SOLID EPOXY

SAYOEPOXI VARNISH SD  
SELF-LEVELLING EPOXI MORTAR 3C  
SAYOEPOXI SD

## WATERPROOFING



A variety of solutions for protecting terraces, walls or roofs from dampness, filtrations or water leaks. The material of the substrate shall serve as an indication of the specific product for each case.

### TELPIN COVER

Waterproof and Elastic mastic coating, based on an aqueous dispersion of modified acrylic resins, with great adhesion strength and very low water absorption.

Its excellent general properties (adhesion to diverse substrates, absence of surface stickiness, elasticity even under low temperatures, water resistance, tensile strength, outdoor stability, etc.), as well as its semi-matte and smooth finish, make it ideal for application on all sorts of tiled roofs, terraces, covers, gutters, facades, etc., where the requirements are waterproofing and avoiding leaks and filtration through cracks or defects in the substrate.

Good results have also been obtained in buried or tiled wall fronts, where a greater thickness and a 5-7-day drying period are recommended, thus ensuring the total disposal of the application water.

Elasticity in the order of 400%, at 20-25°C. The product evidences an elastic performance even below minus 10°C.

Very good resistance to water (absorption <20% under permanent contact) outdoor conditions and general rough weather. Its adhesion and elasticity, combined with its high tensile strength (2.7 N/mm<sup>2</sup>), result in excellent performance, resistance and durability.



### TELPIN COVER FIBER

Elastic and waterproof coating, based on an aqueous dispersion of modified acrylic resins, reinforced with special synthetic fibres, with great adherence and very low water absorption.

Its excellent general properties (adherence to diverse substrates, absence of surface stickiness, elasticity even under low temperatures, water resistance, tensile strength reinforced by the fibres, etc.), make it ideal for application on all sorts of tiled roofs, terraces with good walkability, covers, gutters, facades, etc., where the requirements are waterproofing and avoiding leaks and filtration through cracks or defects in the substrate.

Good results have also been obtained in buried or tiled wall fronts, where a greater thickness and a 5-7-day drying period are recommended, thus ensuring the total disposal of the application water.

Elasticity in the order of 300-400%, slightly controlled by the fibre, at 20-25°C. The product evidences an elastic performance even below minus 10°C.

Very good resistance to water (absorption <20% under permanent contact) outdoor conditions and general rough weather. Its adhesion and elasticity, combined with its high tensile strength (>2.7 N/mm<sup>2</sup>), result in excellent performance, resistance and durability.



## WATERPROOFING



### ELASTIC VARNISH PU.

One-component water-based polyurethane acrylic semi-dull varnish for protection and/or waterproofing of indoor and outdoor surfaces.

Its excellence adherence, elasticity, hardness and outdoor and water resistance make it advisable as a finish varnish for different applications: especially for Micro-cement finish, and as a finish varnish in our façade waterproofing system AQUAFIX ADH, in roofing, terraces, etc.



### CEMENTOUS TELFLEX

Varnish manufactured from of emulsified styrene-acrylic resins.

It evidences a very good adherence on mineral substrates, permanent elasticity, excellent resistance to alkalis and great compatibility with hydraulic binders such as cement and its derivatives.

It was especially designed for its combination with cements or cement-sand mixtures, in the manufactured of waterproofing cement paints and of elastic indoor/outdoor paints, for swimming pools, walls, basements, etc.

It provides the final product with a good consistency and workability and, once dry and cured, with great adherence and permanent flexibility, even at low temperatures and with a good resistance to water and to several chemicals products.





## FLOORS AND PAVEMENTS

In order to achieved the desired technical conditions, before applying the products it is fundamental taking into account the following:

1. A correct preparation and priming of the substrate wherever this is required.
2. The possibility of applying an "anti-slipping" additive for any of the products in our range, so as to attain an anti-slipping pavement (Class 1 or Class 2 types of the technical building code).

### SINGLE COMPONENT

Water – based acrylic, Solvent – based acrylic and methacrylate indicated for the painting of sporting facilities, garages with low/ medium transit, comercial stores, roads or asphalt pavements.

#### TELPIN SPORT

Water paint manufactured based on modified acrylic resins, outdoor-stable pigments and selected arids aimed at providing a final rough surface with greater slipping resistance.

Its excellent combination of adhesion, hardness and elasticity make it ideal for application on the floors of sport tracks and facilities, swimming pool areas, bicycle tracks, strolling paths, etc. Its resistance to algae has been reinforced, to avoid an early appearance of moss.

Excellent effectiveness on concrete, tar and other mineral substrates, when correctly prepared. Very good resistance to water and cleaning soapy or detergent solutions, mineral oils, etc. Its resistance to the growth of fungi and algae has been reinforced.



#### MECUFAL VARNISH

Clear varnish based on non-yellowing methacrylate resins, in which adherence to mineral substrates has been reinforced and sensitivity to humidity has been reduced. Applicable on concrete, stone, (porous, not glazed) brick and other substrates, as penetrating and fixing varnish



#### MECUFAL

Single-component paint, manufactured from methacrylate resins, solvents, pigments and loads, with a good resistance to water and yellowing, plus a good performance both indoors and outdoors. An easily applicable product, even under adverse conditions, that make it useful on substrates such as concrete floors or walls, stone, cement plaster, bricks (porous, not glazed), blocks and other, providing finishes highly resistant to the alkalinity of the substrate, easy to clean and with high durability. It also applicable on primed and other metallic substrates.

Excellent effectiveness on concrete, porous bricks and other mineral substrates, when correctly prepared. Very good resistance to water, acids and diluted alkalis. Non solvent-resistant.



## FLOORS AND PAVEMENTS



### MECUFAL AQ

Water-based paint, manufactured from modified acrylic resins, stable weather-proof pigments and selected loads, and designed to paint floors and other mineral surfaces.

Its excellent combination of adherence, hardness, chemical resistance and its wear strength, make it ideal for application on floors in garages, parking lots, industrial premises, sport tracks and facilities, swimming-pool areas, cycle paths, promenades, etc., where the need arises for resistance to the marks caused by hot tires, along with a very good chemical resistance to products such as acids, alkalis, engine oils, transmission and brakes fluids, anti-freezing agents, gasoline, kerosene and other fuels.

Excellent adherence on concrete, tar and other mineral substrates, when they are correctly prepared.

Very good wear strength and against tire marks. Very good chemical resistance to products such as water, acids, alkalis, engine oil, transmission and brakes fluids, anti-freezing agents, gasoline, kerosene and other fuels.



### SIGNATE PAINT

Paint manufactured on the base of modified acrylic resins, colouring pigments and selected loads, with good drying, adherence and durability properties.

It has an excellent outdoor resistance, with durability exceeding that of other similar signage products of the alkyd or chlorine-rubber type.

Excellent adherence on tar, concrete and properly prepared mineral substrates.

Very good outdoor and wear resistance.



### SAYOCRIL ROADS

Paint based on modified acrylic resins, non-toxic pigments and selected loads, with very good drying, adherence and durability properties.

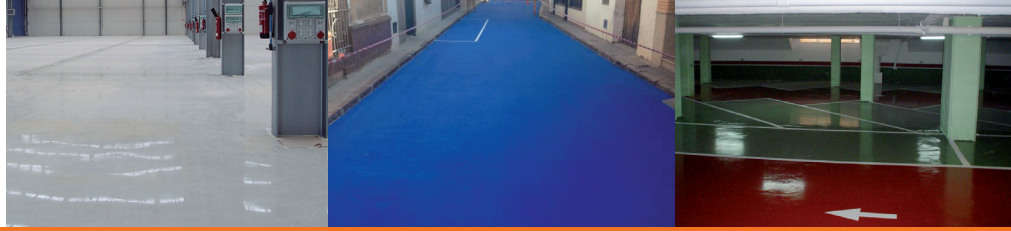
It has an excellent resistance to outdoor conditions, with a higher durability than other similar signalling products, of the alkyd or chlorinated rubber types.

Its composition includes quartz flour of a selected granulometry, which increases its anti-slipping properties in wet surfaces and reduces the risk of accidents.

The fresh paint can be added (immediately) retro-reflective glass spheres, at a rate of 400-500 g/m<sup>2</sup>.



## FLOORS AND PAVEMENTS



### TWO - COMPONENT SOLVENT - BASED

Epoxy and Polyurethane with a high mechanical and chemical resistance, indicated for painting or varnishing pavements, both in-door and our-door, industrial buildings, public parking facilities, garages and in general, high transit concrete pavements.

#### SAYOEPOXI PENETRATING VARNISH

Two-component polyurethane varnish, with a low viscosity and manufactured on the basis of isocyanate-hardened acrylic resins. Combined at a 6/1 ratio in volume with our GF-406 POLYURETHANE CATALYST, it is recommended as a first layer for colour paint systems or, also, as a clear anti-dust fixing and sealing varnish in both outdoor and indoor applications, on concrete, cement, stone, porous bricks and other substrates.

Its adhesion has been reinforced in order to promote its anchorage on mineral substrates.

Very good adhesion on concrete and properly prepared mineral substrates. also adheres to steel, galvanised steel and aluminum.



#### SAYOEPOXI ENAMEL

Two-component highly-glossy epoxy enamel, manufactured on the basis of polyamide-hardened epoxy resins.

After combination of 20 kg with 10 L (4/2) of our GF-533, EPOXY CATALYST, it is recommended as a finish paint with an excellent performance on floors and concrete, cement or other substrates.

It can also be used on metallic surfaces, whether primed or not, in steam-boiler industries, carpentry, metallic furniture, machinery, indoor structures, etc.

Very good effectiveness on steel, concrete and properly prepared mineral substrates.

Very good resistance to water, diluted acids (hypochloric 10%, sulphuric 5%, ...), alkalis (ammonia 25%, sodium carbonate 50%), oils, some solvents, etc. High mechanical strength.

The product was classified in fire-reaction tests as Bfl - S1 in accordance with the EN 13501-1:2007 + A1:2009 standard in a Test performed by the *Gaiker Foundation*.





## FLOORS AND PAVEMENTS



### SAYOPOL FLOORS

Highly glossy two-component polyurethane enamel manufactured on the basis of highly reticulated acrylic resins hardened with aliphatic isocyanates.

After combination of 10 kg with 4 L (2/1) in volume of our GF-406, POLYURETHANE CATALYST, it is recommended as a finish paint with an excellent performance on floors and concrete, cement or other substrates. It can also be used on metallic surfaces, whether primed or not, in steam-boiler industries, carpentry, metallic furniture, industrial vehicles, machinery, indoor and outdoor structures, etc.

It has extraordinary mechanical, chemical and outdoor resistance, with minimal shine and colour variations (depending on the colour) throughout time.

Very good on properly prepared substrates.



### SAYOPOL VARNISH MX

Two -component polyurethane varnish, with high, medium or low gloss, manufactured with acrylic resins, hardened with aliphatic isocyanates, with great mechanical and chemical resistance and a low tendency to yellowing or to the loss of gloss.

When combined 1.5/1, 1.75/1 or 2/1 in volume, depending on gloss, with the POLYURETHANE HARDENER GF-406, it is recommended as a finish varnish on polyurethane, epoxy or similar paints, in which gloss and their general final resistance need to be enhanced.

It can also be applied on mineral substrates such as concrete, cement, stone, etc., after priming with the same product diluted 10-20% and taking into account that the tone could be darkened, providing a brilliant and plastified appearance.

It is also appropriate, as a first coat (diluted) for anti-graffiti systems on porous mineral substrate.

Very good resistance to water, acids, diluted alkalis, oils, some solvents, etc. High mechanical resistance. Under outdoor exposure, very good resistance to shading and yellowing.



## FLOORS AND PAVEMENTS



### TWO – COMPONENT WATER – BASED

Epoxy semi – dull and glossy for walls or concrete pavements where a total absence of odour is required such garages, parking facilities with scarce ventilation, hospitals, canning or food industries, wineries, commercial premises with high transit, etc.

#### URA EPOX VARNISH

Two-component water epoxy coating that produces a glossy clear finish. When combined in a 2/1 ratio in weight with our URA EPOX GF-524 CATALYST, it is used as an impregnation varnish for our URA EPOX paint or as a high-performance clear finish on floors and other concrete, cement, paint or other substrates, when the goal is protecting them with a varnish of a high mechanical and chemical strength and when, practically, we need a total absence of odour, volatile organic compounds (VOCs) and toxicity.

Applicable in food industry premises, wineries, preserved food plants, hospitals, garages, cellars, institutional premises, commercial and industrial warehouses, etc. Good resistance to water, alkali (10% soda), mineral oils, gasoline, gas oil, etc. Moderate resistance to acids. Very good mechanical strength and scratch hardness.

The product was classified in fire-reaction tests as Bfl - S1 in accordance with the EN 13501-1-1:2007 + A1:2009 standard in a Test performed by the *Gaiker Foundation*.



#### URA EPOX

Two-component water-epoxy enamel, with a semi-glossy finish, manufactured based on epoxy resins and amine hardeners. When combined in a 4/1 weight ratio with our URA EPOX GF-524 CATALYST, it is recommended as a finish paint with a high performance on floors and other concrete, cement or other substrates, when, practically, a total absence of odours, volatile organic compounds (VOCs) and toxicity is required.

Applicable in food industry premises, wineries, preserved food plants, hospitals, garages, cellars, institutional premises, etc. Good resistance to water, alkali (10% soda), mineral oils, gasoline, gas oil, etc. Moderate resistance to acids. Good mechanical strength and scratch hardness.

The product was classified in fire-reaction tests as Bfl - S1 in accordance with the EN 13501-1-1:2007 + A1:2009 standard in a Test performed by the *Gaiker Foundation*.



#### URA EPOX SEMI-DULL

Two-component water-based semi-dull epoxy enamel, with a semi-dull finish, manufactured from epoxy resins and amine hardeners. When combined in a 6/1 weight ratio with our URA EPOX GF-524 CATALYST, it is recommended as a finish paint with a high performance on walls and on concrete, cement and other substrates, when, practically, a total absence of odours, volatile organic compounds (VOCs) and toxicity is required. Other mechanical, chemical and wear resistance is also desirable.

Applicable in food industry premises, wineries, preserved food plants, hospitals, institutional premises, etc. Good resistance to water, alkalis (10% soda), mineral oils, gasoline, gasoil, bleach, etc. Moderate resistance to acids. Good mechanical resistance and scratch hardness.

The product was classified in fire-reaction tests as CS1-d0 in accordance with the EN 13501-1-1:2007 + A1:2009 standard in a Test performed by the *Gaiker Foundation*.





## FLOORS AND PAVEMENTS

### TWO – COMPONENT 100% SOLID EPOXY

Wide range of “painting systems” with diverse products and hardeners. Epoxy solutions without any volatile material (water or solvent) for a wide range of systems (colour quartz, multi-layer systems, self-levelling systems) for the application of paints with a high thickness (>2 mm). Appropriate for floors with high durability and resistance, public parking facilities with very high transit, areas with high demands an requiring the total absence of odour, and joints with high resistance; automotive, aeronautic and food industries, wineries, etc.

#### SAYOEPOXI VARNISH SD

Modified epoxy resin, without any solvents. Combined in a 6.6/4 ratio in weight with our SD-620 EPOXY HARDENER (as shown in the corresponding Technical Sheet), it is recommended as an impregnation varnish on concrete and cement substrates and, also, on properly prepared metallic substrates. It is also used as a joint bridge between old and new concrete, because of the excellent adhesion of the product, even on wet surfaces. When combined in a 6.6/3.3 ratio in weight with the SD-625, EPOXY HARDENER, it is used as an impregnation varnish on mechanically prepared floors or as a sand receptor resin in “multi-layer” systems. If besides, we add 25 kg of our SELF-LEVELLING MORTAR SAND, a self-leveling three-component epoxy mortar is obtained for the application of high thicknesses (> 2 mm) in a single layer (see the corresponding Technical Sheet). Combined in a 6.6/3.05 ratio in weight with our SD 690, EPOXY HARDENER, it can be used as a clear finish varnish in multi-colour and other pavements.



#### SELF-LEVELLING EPOXI MORTAR 3C

Epoxy product without solvents, that is delivered as three separate components, that is, resin, hardener and sand.

By combining SAYOEPOXI VARNISH SD in a 6.6/3.3 ratio in weight, with the SD-625 EPOXY HARDENER and adding 25 kg of our SELF-LEVELLING MORTAR SAND, obtain a three-component self-levelling epoxy mortar for application on high thicknesses (>2 mm) in a single coat.

The mixture of sand, especially explored, facilitates packing and allow us to obtain a material with self-levelling characteristics with a high sand/resin ratio (>2.5/1), thus implying a very high final mechanical resistance.



#### SAYOEPOXI SD

Two-component epoxy product, without any solvents, manufactured on the basis of amine-hardened epoxy resins. When combined in a 12/2.5 ratio in weight with our SD-660 EPOXY HARDENER, it is recommended as a finish paint with an excellent performance on floors (self-leveling) and other concrete or cement substrates, as well as on properly primed or prepared metallic substrates. It is recommended for all sorts of industries (food, electronic, chemical) and, in general, wherever a high-thickness finish is required, free from solvents, with excellent chemical and mechanical strengths, and easy maintenance.

Very good general mechanical and chemical strengths. Its fast drying produces an early development of its properties, with an excellent surface finish. Under highly adverse temperature and relative humidity conditions, it may be highly sensitive to water stains.





**wood**



In many painting processes, both professionals and private individuals, must apply specific products in wooden elements (doors, Windows, frames, moldings, etc).

PINTURAS COLAMINA offers all sorts of products for the conservation and maintenance of wood (vertical) both in-door and out-door, such as varnishes, protectors or sealants.

#### SEALANTS AND PRIMERS

WOOD PRIMER

COLOURLESS PROTECTION BASE

#### FINISHES

YATCH VARNISH

URLASUR

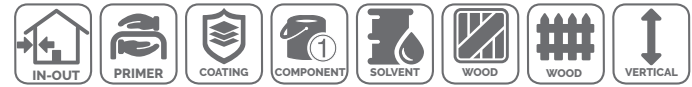
## SEALANTS AND PRIMERS



### WOOD PRIMER

Synthetic primer manufactured based on alkyd resins, with a great covering capacity.

Our Sealant is a product indicated as a primer for both old and new wood for their further painting with fat or synthetic enamels. It can also be used as a primer on bricklaying surfaces or even on properly prepared metallic substrates.



### COLOURLESS PROTECTION BASE

Fixation, protection and preventive product for the treatment of wood.

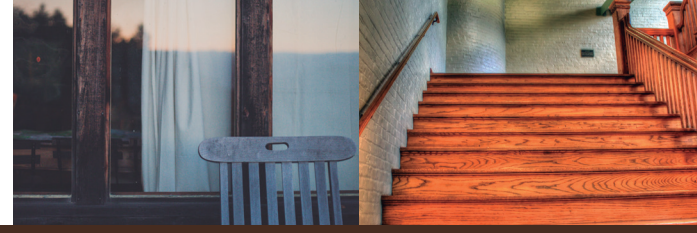
It is manufactured with special synthetic resins and reinforced with preservatives and repellents providing it with a preventive nature against blue-stain fungi and putrefaction, as well as against insects, such as spiders, moths, woodworms, etc.

Its non-film-coating nature, that is, the fact that it does not produce a continuous or closed film, make it ideal for its use as a protective base in all sorts of new or restored wood, especially when it must be applied on open-pore coloured varnishes, "lasur"-type, and even with closed-pore varnishes.

It is not recommended for use in hives or other type of constructions aimed at containing insects.



## FINISHES



Wide range of finishes, both single – and two – component, of different types, depending on the level of demand required. Durability, weather resistance, physical and chemical resistance, etc.

### YATCH VARNISH

Paint manufactured on the base of alkyd resins, with a great coverage power, with a good gloss and elasticity, advised for finishing metallic and non-metallic surfaces both indoor and outdoor.

Easy-to-apply paint, especially with a brush, with very good levelling properties and avoiding cords, which make it advisable for home applications, doors, windows, balconies, industrial structures or in public works and, also, machinery, metal carpentry, water boilers, etc.



### URLASUR

Open-pore "lasur"-type water varnish, with fixing, decorative, protective and preventive properties for indoor and outdoor wood treatment.

It is manufactured with special synthetic water-soluble resins and reinforced with preservatives and water repellents providing it with a preventive nature against blue-stain fungi and putrefaction, as well as against insects, such as moths, woodworms, etc.

It has an excellent applicability, without any overtones in joint areas, and it strongly enhances the natural veins of the wood.

Its non-film-coating nature, at normal thicknesses, prevents the formation of a continuous or closed film. This allows for transpiration and for the natural expansion and contractions of wood resulting from temperature and relative humidity changes, without any cracking or detachments, as those typical among "closed-pore" products.

The pigmentation of the natural wood tones provides it with an excellent physical protection against UV rays.

Its use is not recommended for hives or constructions aimed at insects.

Good resistance to water, to outdoor conditions and to the typical wood expansion and contraction, considering its slightly elastic and non-film-coating nature.



An operating room with a surgical table covered in a blue cloth. Two large surgical lights are visible, one on the left and one on the right. A television monitor is mounted on a stand in the background. The room has a clean, clinical appearance with light-colored walls and a tiled floor.

# special paints





PINTURAS COLAMINA develops and produces special paints so as to provide solutions to different types of problems; heat loss or heat resistance, dampness or the need to achieve an antibacterial space.

Additionally, solutions are provided in order to eliminate products applied temporarily or prepare the substrate for its painting. Effective responses to diverse situations in every area.

#### THERMO – INSULATING PAINTS

STANDAR

MAX

#### ANTI – BACTERIAL PAINTS

MATT SILKY NOBAC

URA EPOX NOBAC

#### OTHERS

HEAT – SHIELDING PAINT

PAINTS FOR SWIMMING POOLS

PEELABLE VARNISH

STRIPPING

MINERALISER

## THERMO – INSULATING PAINTS

Capacity for thermal channel breakage thanks to its hollow glass microspheres of a different nature. It solves condensation problems (cold walls), has a thermos-insulating effect avoids noise reverberation in premises with a high echo level.

### STANDAR

Waterproof and thermal-insulating coating based on the water dispersion of a modified acrylic resin and long-lasting hollow ceramic microspheres.

A paint with significant adherence, elasticity and coverage, excellent applicability and outdoor resistance. Reinforced against the growth of fungi and algae.

Used on roofs as an anti-heat coating, as it reflects the sun radiation in the summertime. When used on outdoor substrates, it improves the thermal break by hindering cold from being transmitted indoors.

When used on indoor walls facing the north or with a deficient insulation and, therefore, with a high degree of condensation, it increases the dew point and does even reach getting rid of the problem.

A certain acoustic insulation and the reduction of sound reverberation in large rooms has also been observed in certain cases.



### MAX

Waterproof and thermo-insulating coating based on the aqueous dispersion of a modified acrylic resin.

It is added with hollow micro-spheres of different materials and combined sizes in order to attain a very low density, especially in the dry film and, therefore, an optimum thermal insulating, acoustic and, even, heat-saving and storing effects.

Paint with a great adherence, elasticity, coverage and excellent applicability and resistance to outdoor conditions. Reinforced against the growth of fungi and algae.

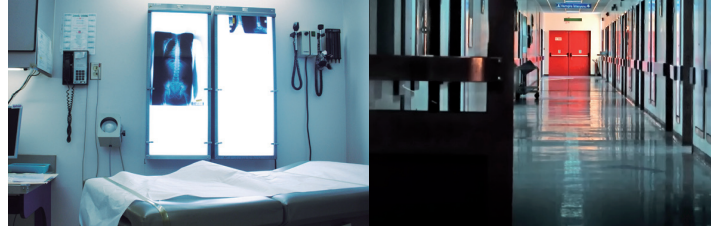
Used on roofs it has anti-caloric and sunray reflecting effects in the summer time. On outdoor substrates, it improves thermal bridge breaking hindering the transmission of heat indoor.

On indoor, north-oriented or poorly insulated walls and, therefore, with a high condensation grade in the winter time, it rises the dew point, and does even reach a final solution to the problem.

Due to the especial features of this paint, acoustic insulation can also be obtained, as well as a reduction in sound reverberation in large premises, such as cinemas, theatres, concert hall or churches.



## ANTI – BACTERIAL PAINTS



Range of anti-bacterial paints for applications demanding a very high asepsis level (operating theatres, white rooms) or in premises with a high level of humidity, where the appearance of micro-organisms is to be avoided (gyms, laundries, food industries, wineries, etc).

### MATT SILKY NOBAC

Outdoor-indoor finishing paint based on a water-base vinyl acrylic resin, with selected pigments and extenders.

Paint with great whiteness and good cover up, very good applicability and scarce roller splashing.

It is formulated with special loads and pigments for a silky matte finish that minimises defects caused by joints and irregularities in the substrate, provides a clean white surface as well as live tones in intense colours, with high resistance to wet scrubbing and to all sorts of marks. It is reinforced for offering a greater resistance to the growth of mould.

TELPIN MATE SEDA NOBAC is an anti-bacterial product, formulated with modified silver ions, that inhibit bacterial growth up to 99% on the substrate, as of 24 hours after its application. This anti-bacterial characteristic persists throughout time, allowing for several washing cycles and can be measured in accordance with the ISO 22196 standard.

Measured in wet-scrub cycles, TELPIN MATE SEDA NOBAC will overcome 10.000 double scrubs, thus complying with the UNE 48243 Standard, or with Class 1 in Standard UNE-EN 13300.

Good resistance to outdoor conditions, marking and general mechanical actions.

The product was classified in fire-reaction tests as B-S1,d0 in accordance with the EN 13501-1-1:2007 + A1:2009 standard in a Test performed by the *Gaiker Foundation*.



### URA EPOX NOBAC

Two-component water-based semi-dull epoxy enamel, with a semi-dull finish, manufactured from epoxy resins and amine hardeners.

When combined in a 6/1 weight ratio with our URA EPOX GF-524 CATALYST, it is recommended as a finish paint with a high performance on walls and other concrete substrates, cement, etc. when, practically, a total absence of odours, volatile organic compounds (VOCs) and toxicity is required. Other mechanical, chemical and wear resistance is also desirable.

URA EPOX SEMI-DULL NOBAC is an anti-bacterial product formulated with modified silver ions that inhibit the growth of bacteria in the substrate in up to 99% as of 24 hours after its application. This antibacterial feature persists throughout time, allowing for several washing cycles and is measured as per the ISO 22196 standard.

Applicable in food industry premises, wineries, preserved food plants, hospitals, institutional premises, etc.

Good resistance to water, alkalis (10% soda), mineral oils, gasoline, gasoil, bleach, etc. Moderate resistance to acids. Good mechanical resistance and scratch hardness.

The product was classified in fire-reaction tests as C-S1,d0 in accordance with the EN 13501-1-1:2007 + A1:2009 standard in a Test performed by the *Gaiker Foundation*.



## OTHERS

Effective responses to diverse situations in every area.

### HEAT – SHIELDING PAINT

Paint manufactured based on special modified synthetic resins, in order to increase its thermal resistance.

It is recommended for painting iron and steel surfaces, which are exposed continuously to high temperatures (even above 300°) and are to be given good anti-corrosive protection properties or against chemical agents and a decorative finish.

It is recommended for painting barbecues and furnaces, chimneys, piping and, in general, on equipment functioning under medium-high temperature conditions.



### PAINTS FOR SWIMMING POOLS

Pure chlorinated rubber; that is, not combined with alkyd, hydrocarbon or other resins, which save money at the expense of poorer properties.

Its glossy and smooth finish, as well as its resistance against water and acid and alkaline solutions, even in high concentrations, make it ideal for its application on swimming pools, drums, floors, etc. and, also, as a finish for previously primed metallic structures.

Very good resistances to water, acids and alkyds, even when concentrated (35% hydrochloric acid, > 60 % sulphuric acid, 20 % soda, etc.), mineral oils, etc.

Non-resistant to solvents, vegetal oils, etc.



### PEELABLE VARNISH

Water-based detachable product designed for temporary protection of diverse materials, developed on the basis of an aqueous dispersion of specially modified and additivated resins.

When applied on the substrate, it creates a strong and elastic coat that, once dry, can be detached easily by simply pulling from any loose area.

Especially recommended for application on any substrate that may be damaged or dirtied during handling or installation, such as coated, non-coated or anodised aluminium profiles, pre-coated plates in paint booths, steel, galvanised steel, plastics, glass, polished stone, some types of paints, etc.

Considering the diversity of the substrates, a previous test is recommended.

Although it may sometimes be used for brief outdoor applications, it is not designed for protection during long-lasting outdoor transportation.

Good resistance to water and even to diverse solvents. It can bear splatter from paints, cements, putties, etc. and, when the varnish is stripped the substrate remains clean and without any remains of varnish or dirt.



## OTHERS



### STRIPPING

New generation scaler and paint-removing gel, free from methylene chloride, acids or alkalis; it exerts a fast action and high effectiveness on a wide variety of paints.

When applied on paints on a metallic substrate, the paint is wrinkled and bulged (alkyd enamels, polyurethanes, etc.) or softened (epoxy, water, kiln-drying, etc.) and, thus, it can be dragged using a spatula or similar tool.

In paints or varnishes on porous substrates (wood, concrete, etc.), the wrinkling is not so impressive as in metal, but the layer is softened and easily dragged using a spatula or even scrubbing with a simple mop and water.

DECAPEX GEL can be easily mixed with water and, therefore, the remains of paint-scaler can be cleaned with either a solvent or water.

Excellent effectiveness on a wide range of paints and substrates; nevertheless, the more porous the substrate (wood, concrete, etc.), the more complicated the action on the paint that is deeply inserted.

Timing on metal plates will range from a strong wrinkling in less than one minute for synthetic enamels to 5 minutes in maintenance polyurethanes, 30' for softening kiln-dried paints, and 30-60' for epoxies. On wood, the scaling work will take over 15-20 minutes and dragging with a spatula.

For thick layers of old-aged paints, successive layers will be required in order to reach the substrate.



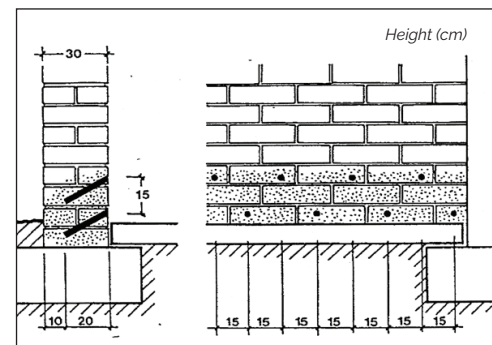
### MINERALISER

Liquid product with a double effect, waterproofing and water repellent, in order to avoid the increase of humidity due to capillarity in the mineral substrates.

It can be applied on porous materials, such as concrete, brick, cement, stone, etc., in which the isolation with respect to the surrounding ground is improper and, therefore, the humidity in the medium is directly in touch with the substrate.

When applied in depth through holes drilled on the wall, where the product is injected by pressure or gravity, it has a first constrictor effect upon the capillary channels, reducing their diameters by the precipitation of silica crystals. Additionally, this thinning is combined with a humidity repellent effect that, as a whole, will prevent the passage of fluid water, while remaining permeable to water steam.

On highly porous substrates the MINERALISER can be applied superficially (without drilling holes), considering that penetration will be much lower and that the final effect will be more superficial, especially consolidating and water repellent.





# customised paints

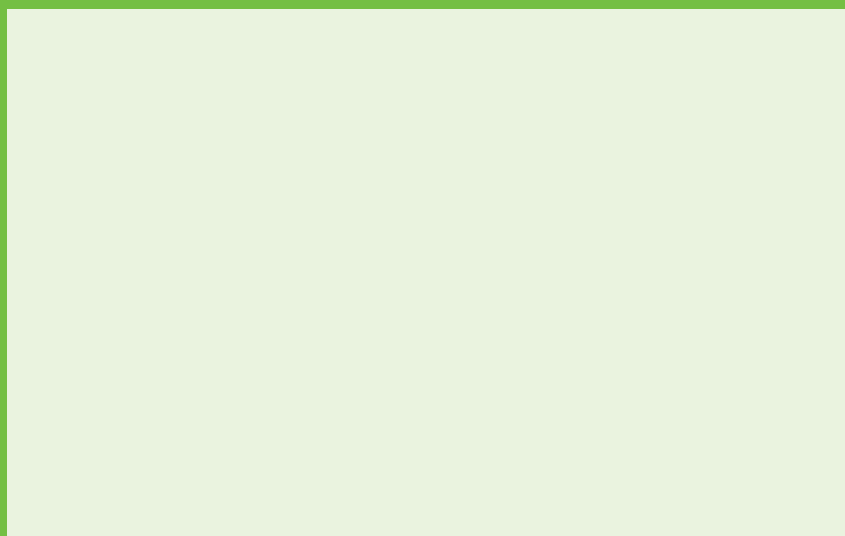


If you cannot find the product you need or require paint with some special characteristics, considering its use, application, conditions to be borne or many other parameters.

PINTURAS COLAMINA does usually develop specific and unique products in which paint suits you and not you to the paint.

Our technical department is always available to listen to your needs and to advise you for the selection of the best product, modifying it to fit you or, else, creating a new one.

PINTURAS COLAMINA, S.L. Ctra. Artica, s/n Polígono San Cristóbal . 31013 Artica . Navarra. Spain.  
T. +34 948 12 01 75 - +34 948 12 14 11 | F. +34 948 14 75 38 | colamina@pinturascolamina.com



[www.pinturascolamina.com](http://www.pinturascolamina.com)